

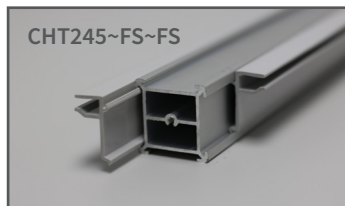
T3 FRAME PROFILES

T3 FRAME DATA SHEETS - PROFILES

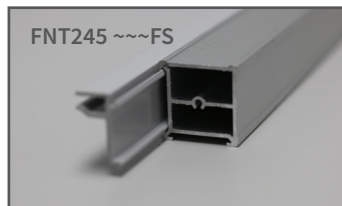
T3 Frame has a variety of framework profiles that make up the core of our most innovative and versatile modular display framework. Each profile has been developed to fill a particular display design needs. This data sheet will give you a brief explanation of each profile, what a profile reference code means and a code index of orientations. Below is an illustration of what a typical drawing label would look like. Below the box is a key illustrating the profile cross-section of all the profiles in our

CH01		CHT0245		~ A ~ B ~ C ~ D			
Price list Reference		Profile Code & Centre / Centre Size in mm		Profile Side			
AIRFRAME	FUSION	CHANNEL	ULTRALITE	ULT-FUSION	FLEXI-FRAME		

EXAMPLES OF JUST SOME OF THE CONFIGURATIONS:



Channel tube with fabric silverlite on sides B & D.



Fusion tube with fabric silverlite on side D



Fusion tube with Steel tape on sides A & B.



Fusion tube with fabric silverlite 45° on side D

When viewing a drawing of a T3 Frame structure there will be a reference code for each profile. The code will make reference to extrusions, steel or Velcro tape placed onto the profile.

AIRFRAME (Product Code : AFT)

The original seamless profile. Designed to carry all types of roll up or rigid panel graphics using magnetic or Velcro tape.



CHANNEL (Product Code : CHT)

Created to capitalise on the market for fabric graphics with silicon edging. The channel on all sides allows for multiple extrusions to be utilised.



FUSION (Product Code : FNT)

Combines the best of both the Airframe and Channel profiles. This is our most versatile and popular profile as it can be used for any graphic type.



ULTRALITE CHANNEL (Product Code : UCT)

A plastic version of the channel profile. Used predominantly to create lightweight structures suitable for most graphic applications



ULTRALITE FUSION (Product Code : UFT)

A plastic version of the fusion profile. used predominantly to create lightweight plinths and counters with both rigid and fabric graphics.



FLEXI-FRAME (Product Code : UFXC)

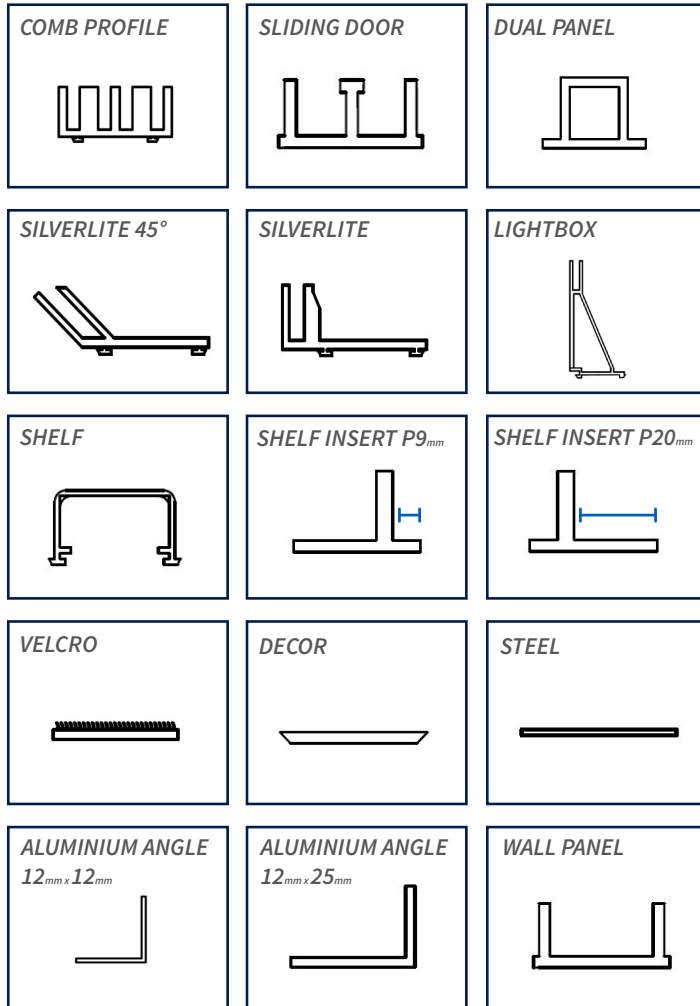
A flexible profile used to create display walls that can be manipulated into multiple shapes and orientations. Magnetic roll up graphics only.



PROFILE INFORMATION

When viewing a drawing of a T3 Frame structure there will be a reference code for each profile. The code will make reference to and extrusion, steel or Velcro tape placed onto the profile.

Below is the cross sections for the various extrusions available when using the T3 Frame product range..



Below is a full list of all the reference codes for extrusions, Velcro and magnetic tape fitted onto T3 Frame profiles.

EXTRUSION DESCRIPTION	CODE
Comb	C
Decor	D
Decor with Magnetic tape	DM
Decor with Velcro tape	DV
Decor with steel	DS
Dual panel	DP
Extrusion 12mm Blade	E12
Extrusion 20mm Blade	E20
Extrusion 25mm Blade	E25
Extrusion 12mm Blade c/w Velcro	V12
Extrusion 25mm Blade c/w Velcro	V25
Extrusion 12mm Blade c/w Steel	S12
Extrusion 25mm Blade c/w Steel	S25
Flexi comb	FFC
Flexi 45 Deg	F45
Flexi silverlite	FFS
FX Velcro	FV
FX Steel	FST
FX Magnetic Tape	FMT
Flexi panel/shelf	FPS
Lightbox	L
Magnetic Tape	M
Panel/Shelf	PS
Panel/Shelf Velcro	PSV
Shelf bracket	SB
Silverlite	FS
Silverlite 45°	S45
Steel	S
Sliding door	SDD
Velcro	V
Wall Panel	WP

CALL +32 (0) 384 83 02

EMAIL info@next-xpo.com

