

T3
LITEBOX

T3 LITEBOX DATA SHEETS - LIGHTING CONFIGURATIONS

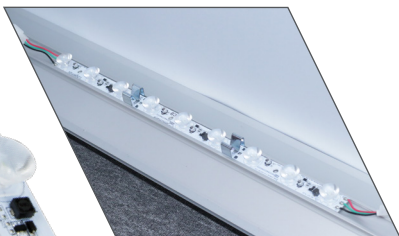
The T3 Litebox is one of the most versatile and easy to use visual display solutions available currently in the industry. Assembled in under 10 minutes, all its components are designed to create a tool free, unique solution that can be used in any industry and for any application. Below showcases the few components that are required to illuminate your display as well as the ideal lighting layout configurations for your chosen T3 Litebox.

LS24V056-5L/9L (CODE)

LED LIGHT STRIPS 24 VOLT (5/9 LED)



9 LED light strip



5 LED light strip

LD24V100 (CODE)

100 WATT T3 LITEBOX TRANSFORMER

The smaller 100 WATT transformer is ideal for small to medium sized T3 Litebox displays. Its compact design makes it unobtrusive to the viewer.



LD24V200 (CODE)

200 WATT T3 LITEBOX TRANSFORMER

The large 200 WATT transformer is for medium to large displays that require many LED strips to illuminate your displays.



LBL460 (CODE)

EXTENSION LEAD 460MM

The lead allows for LED strips to be connected in series over a greater distance. Allowing you to minimize the amount of LED strips required with a display



LBSMC (CODE)

M-CLIP

Used to secure the LED strips into the channel of the T3 Frame profile.

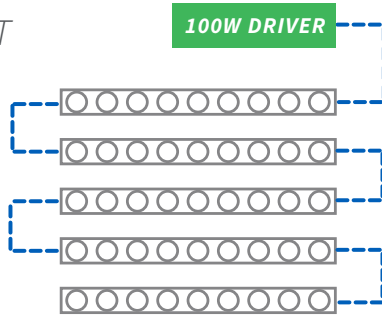


The configurations below show the **maximum** configurations for the LED stick lights.

For connectivity LED stick lights can be either connected directly together using either or 5/9 LED light (60-120mm MIN/MAX) or extended by using the Extension lead (LBL460) which provides an extra 460mm, ideal for corners and connectivity around tubes.

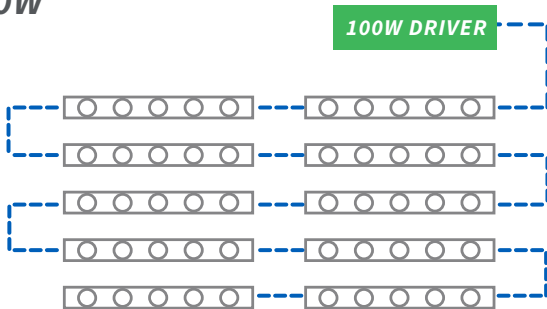
x5

9 LED STICK LIGHT
per **100W**



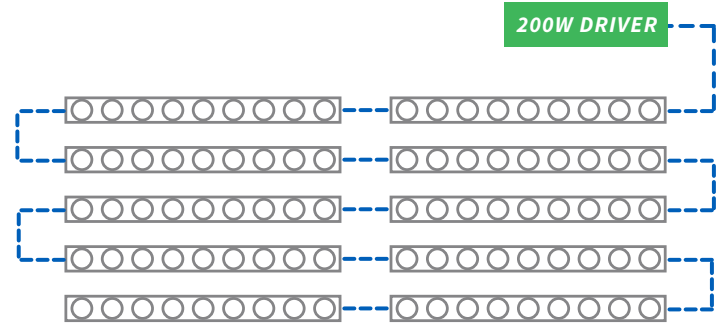
x10

5 LED STICK LIGHT
per **100W**



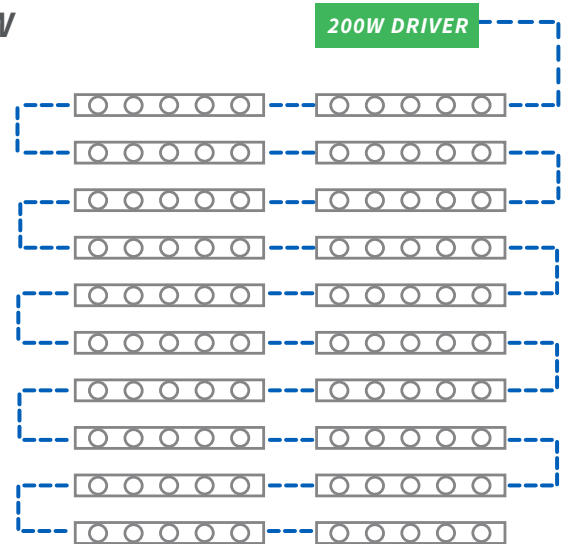
x10

9 LED STICK LIGHT
per **200W**



x20

5 LED STICK LIGHT
per **200W**



CALL
+32 (0) 384 83 02



EMAIL
info@next-xpo.com

